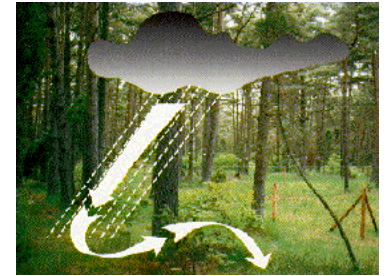


ICP Integrated Monitoring of Air Pollution Effects on Ecosystems -

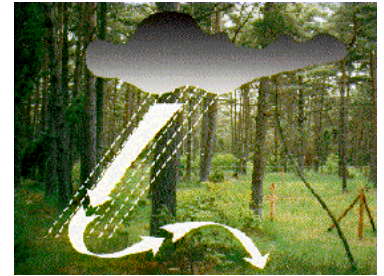
ICP IM

*Achievements & Priorities
2016-2017*

Lars Lundin and Martin Forsius



- 1. ICP IM TF 2016*
- 2. Focus of work 2016/2017*
- 3. Key results and achievements*
- 4. Future plans; workplan 2016-2017*
- 5. ICP IM TF 2017*



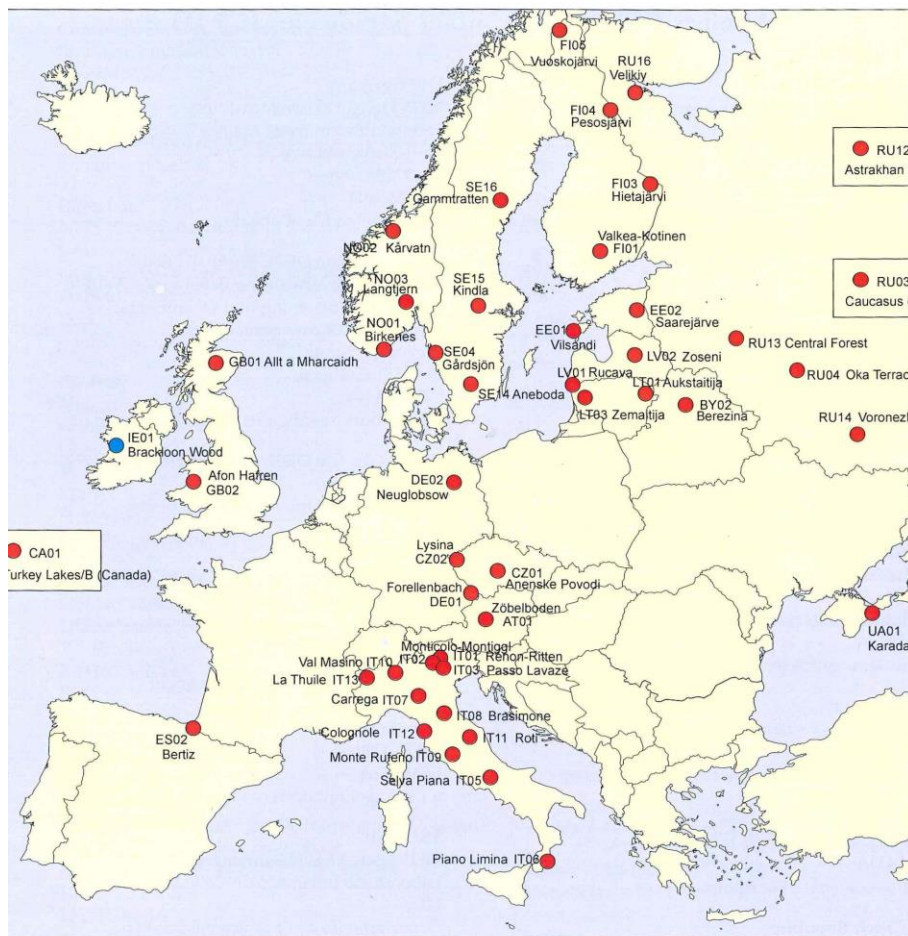
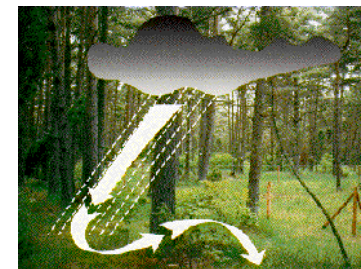
Database update - data from 2015

2016-12-01:

c. 14 countries

c. 40 countries for period 2009 - 2015

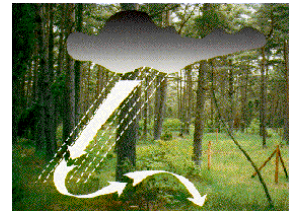
Integrated monitoring sites



● Site with on-going data submission ● Site re-established in 2012

June 2014

17 countries
41 active sites
Ukraine 1
Ireland restart
Switzerland one new site
Poland with intentions



Ongoing priority work items

Biodiversity indicators and issues related to CL and modelling

Work on HM baseline, budgets and critical loads

Update results on mass balances for sulphur and nitrogen

Common EMEP and WGE Trends report - Now published

Collaboration between IM, EU projects and LTER Europe

Common workplan items related to CLRTAP strategy (e.g. CLRTAP Assessment report).



Report and scientific paper on mass balances and indicators for sulphur and nitrogen in catchments

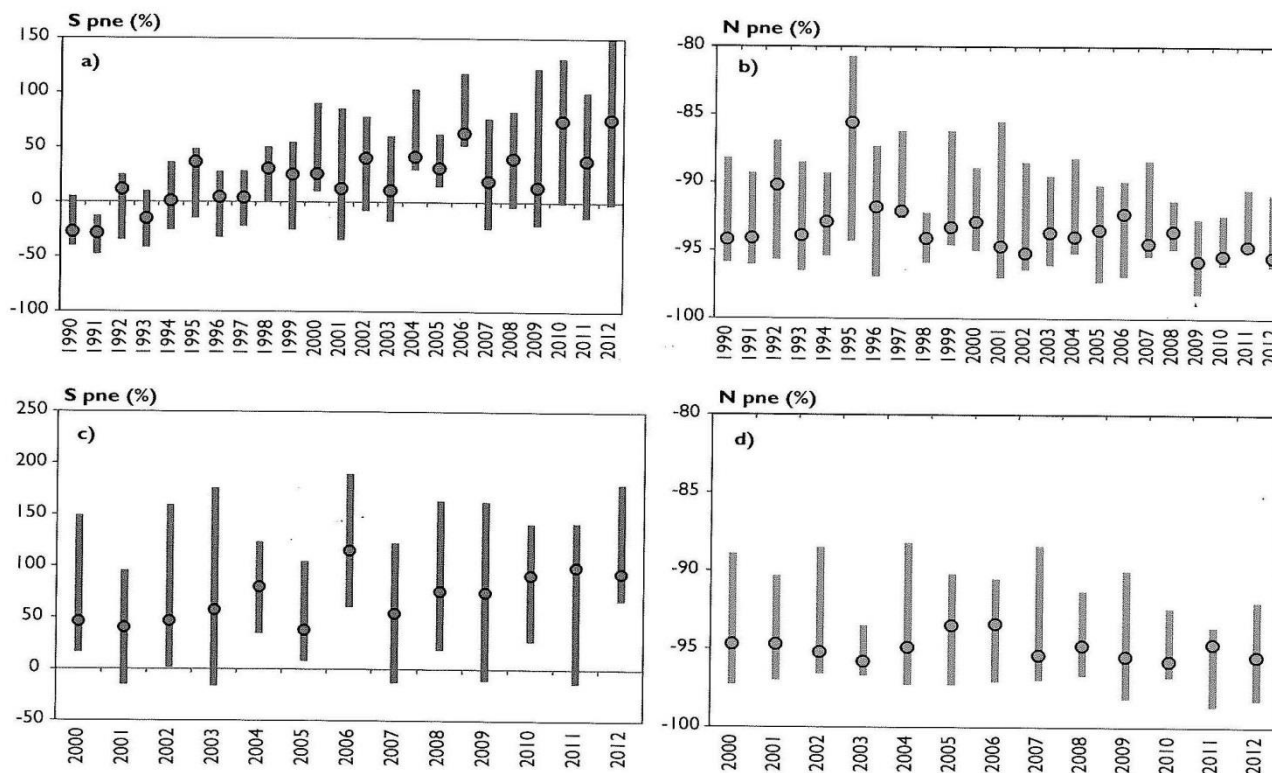
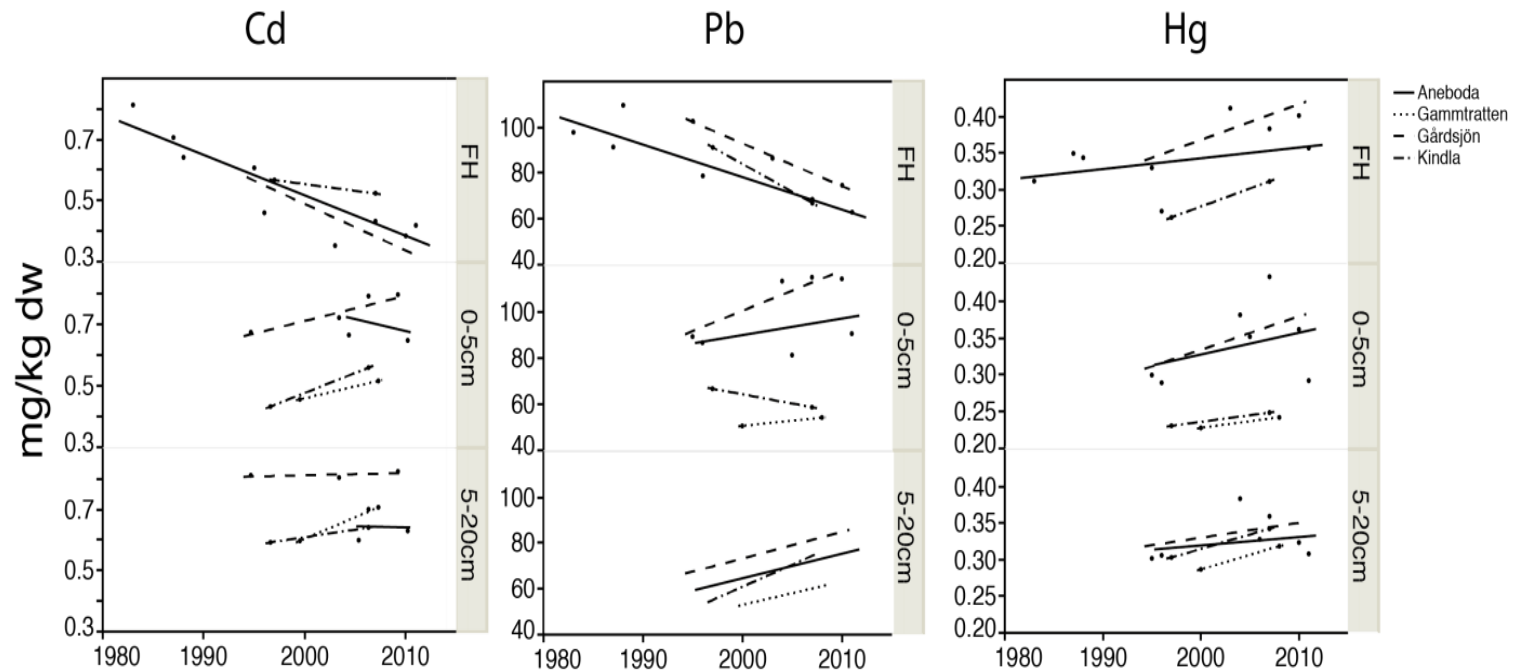


Figure 3.2 Percentiles (25%, median 50%, 75%) of percent net export (pne, %) of sulphate (SO₄) and total inorganic nitrogen (TIN) for the IM sites CZ01, CZ02, DE01, FI01, FI03, NO01, NO02, SE04 in 1990–2012 (a and b, respectively) and for the sites CZ01, CZ02, DE01, EE02, FI01, FI03, IT01, LT01, LT03, LV01, LV02, NO01, NO02, SE04, SE14, SE15, SE16 in 2000–2010 (c and d, respectively). DE01 and SE14 were omitted from the calculation of pne for TIN due to excess N mineralization after Norway spruce (*Picea abies*) dieback due to a bark beetle attack in 1996–1997 and storm logging / bark beetle attack in 2005–2009, respectively.



Metal content in the soil during 1980-2012 in Swedish IM-sites

decrease in the humus layer but increase in deeper layers
Hg increases in all layers





Planned ICP IM work and reports 2016-2017

ICP IM 25th Annual Report 2016

Report (2016) on dynamic response of vegetation changes in relation to N - Scientific paper in 2017

Report on assessing long-term trends of S and N

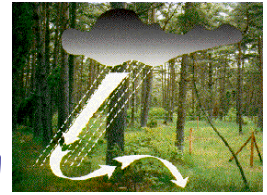
Report on HM in IM site compartments (2017)

Progress report on mercury with ICP Waters

Report on connections between calculated CL exceedances and observed impacts of N (2017)

In 2017 the 25th ICP IM Task Force meeting joint with ICP Waters

ICP IM 26th Annual Report 2017



Increased possibilities to deliver required science in the future

Intense collaboration between ICP:s:

- Increase the monitoring regions
- Increase policy oriented assessments

EC collaboration projects; New Horizon 2020

ICP IM relates to

ALTER-Net II

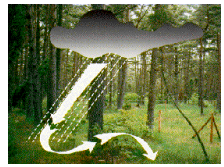
LTER Europe

LIFE Watch <http://www.lifewatch.eu/>

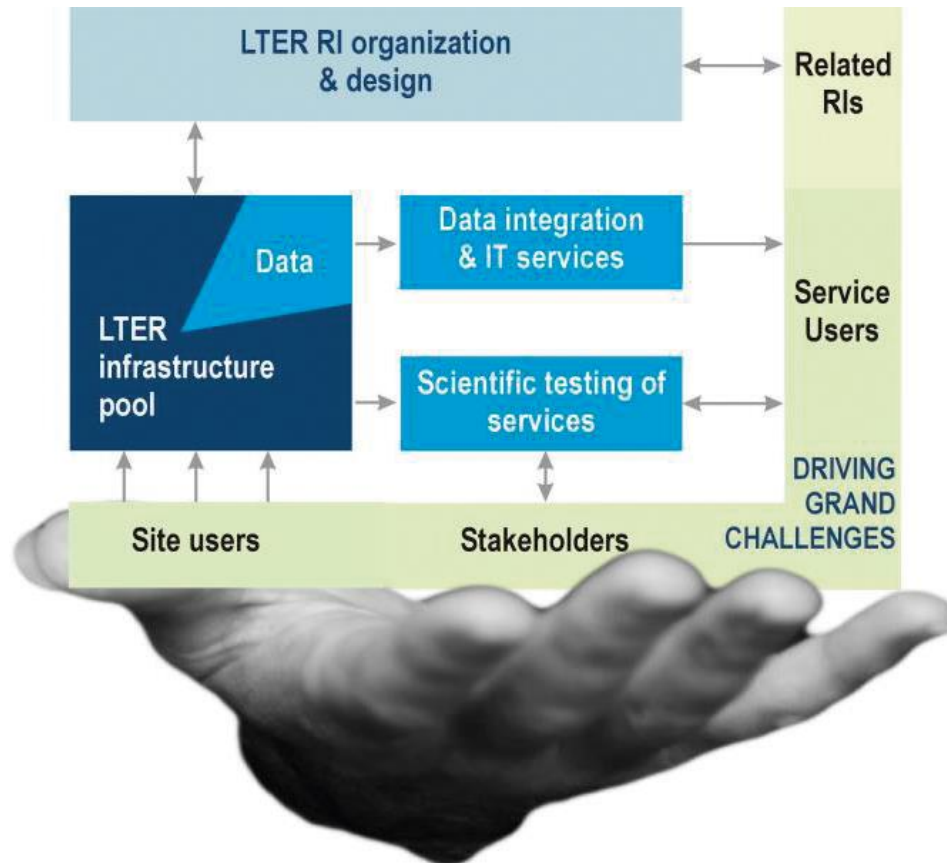
EnvEurope

EU Cost action FP0903

EU projects SoilTrEC, Expeer ...



Main features of the EU Horizon 2020 eLTER project





Planned ICP IM work and reports 2018-2019

Next Workplan period

To be discussed in the Thursday TF meeting

ICP IM Mandates

WGE/EMEP Joint report

ICP IM Technical report

Database issues

ICP Waters "Acidification project/report"

ICP IM 26th Annual Report 2017

ICP IM TF 2017

in May in Uppsala, Sweden with ICP Waters



*Thank You
for
attention!*



The hosts



The venue

Water and Forest



Nature

